

GENERAL ASSISTANCE

State of New Mexico Human Services
TANF, WIC, LIHEAP, TEFAP, SNAP (Food
Stamps,) Medicaid, Medicare
(800) 432-6217

NM Health Insurance Marketplace

NM Health Insurance Exchange (BeWellNM)
1-855-996-6449
www.bewellnm.com or www.healthcare.gov

Prescription Assistance

Familywise Prescription Discount Card
Save an average of 45% on prescriptions
800-222-2818
www.familywise.org

CHILD CARE

Albuquerque

City of Albuquerque Child & Family
Development Services (0-5 yrs. old, low income)
505-767-6500

Statewide

New Mexico Kids Resource & Referral
505-277-7900/ 800-691-9067
NMkids.org

NM Dept. of Children, Youth & Families
800-832-1321

CLOTHING ASSISTANCE

Albuquerque

APS Clothing Bank & School Supply Barn
(See APS school teacher, counselor or social worker for
referral)
505-248-1873

Birthright of Albuquerque (maternity & infant clothing)
505-262-2235

Rio Rancho & Bernalillo

Storehouse West
505-892-2077

Dial 2-1-1

The United Way 2-1-1 line provides free
information & referral to health and
human services, government agencies,
and community-based organizations
covering the following areas:

Basic Human Needs Resources:

Food Pantries, Clothing Banks, Shelters, Rent
Assistance, Utility Assistance

Physical & Mental Health Resources:

Community Healthcare, Disease & Illness
Related Services, Counseling, Crisis Lines

Domestic Violence & Sexual Assault:

Shelters, Counseling, Outreach & Prevention

Seniors & Persons with Disabilities:

Senior Services, Meals, Adult Protective
Services, Disability Related Services

Children, Youth and Family Supports:

Child Care Information, Child Protective
Services, Family Resource Centers

Volunteer Opportunities & Donations

**The United Way 2-1-1 line
is a phone service only.**

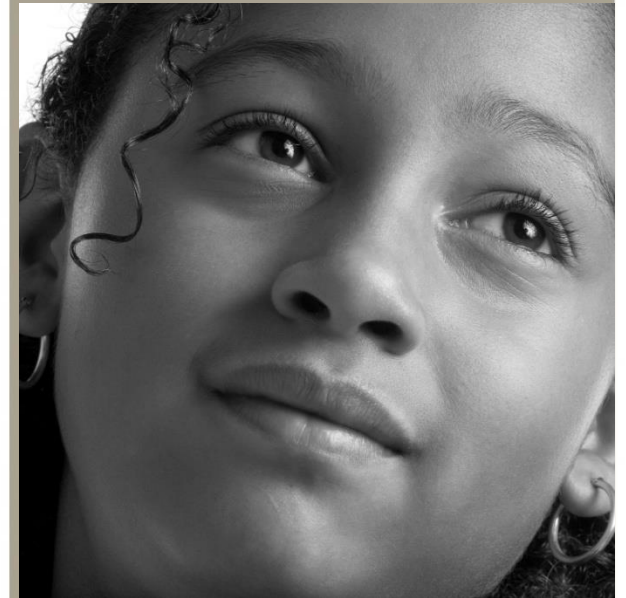
No walk-in service available

Calls answered 7 days a week, 8am-Midnight
Information also available online at:
www.uwcnm.org/211



Brochure updated 8/14/2019

*In Times of Need,
Information is Available*



INFORMATION & REFERRAL

TOLL FREE: 2-1-1

OR (505) 245-1735





www.uwcnm.org

EMERGENCY NUMBERS

DIAL 9-1-1 IN CASE OF AN EMERGENCY!

NON-EMERGENCY POLICE

505-242-COPS (2677)

NEW MEXICO CRISIS AND ACCESS LINE

1-855-NMCRISIS (662-7474)

AGORA CRISIS CENTER

505-277-3013

NEW MEXICO POISON CENTER

505-272-2222

RAPE CRISIS CENTER OF NEW MEXICO

505-266-7711

FAMILY ADVOCACY CENTER

505-243-2333 Domestic Violence, Assault & Abuse Services

CHILD PROTECTIVE SERVICES

505-841-6100/ 800-797-3260/ 855-333-SAFE (7233)

ADULT PROTECTIVE SERVICES

866-654-3219

THE RUNAWAY HOTLINE

800-786-2929 (RUNAWAY)

AIDS HOTLINE-CDC HOTLINE

800-232-4636

ABQ HEALTHCARE FOR THE HOMELESS

505-766-5197

THE CDD CENTER FOR DEVELOPMENT & DISABILITY

800-552-8195

ELDERLY ASSISTANCE

Albuquerque

Catholic Charities

505-724-4670

City of Albuquerque Department of Senior Affairs

505-764-6400

New Mexico Aging & Long Term Services

800-432-2080 – Toll Free

Los Lunas & Belen

Los Lunas Senior Center

505-839-3853

Belen Senior Center

505-864-6739

Rio Rancho & Bernalillo

Meadowlark Senior Center

505-891-5018

SNAP/FOOD STAMPS

State of NM Human Services

800-432-6217

FOOD PANTRIES

Call pantry for information regarding requirements & hours of service

Albuquerque

ROADRUNNER FOOD BANK- FOOD PANTRY REFERRAL LINE

866-327-0267 – Toll Free

City of Albuquerque
Neighborhood Services
(Call city information line for multi-
service center locations throughout
Albuquerque)
3-1-1

Echo, Inc. (60+ over)
505-242-6777

Rio Grande Food Project
505-831-3778

The Storehouse
505-842-6491

Los Lunas & Belen

Midwest NM CAP
505-865-9697

Roadrunner Food Bank-Food Pantry
Referral Line
866-327-0267 – Toll Free

Rio Rancho & Bernalillo

Storehouse West
505-892-2077

St. Felix Pantry, Inc.
505-891-8075

Moriarty- Torrance County

Bethel Community Storehouse
505-832-6642

UTILITY HELP

Agencies require a Disconnect Notice.

Call agency for guidelines/funding status.

Statewide

LIHEAP

800-283-4465

RENT/UTILITY HELP

Agencies require a Disconnect Notice or

Eviction Notice. Call agency for
guidelines/funding status.

Albuquerque

Catholic Charities

505-724-4670

The Rock at Noon Day

505-246-8001

St. Vincent de Paul Society

505-346-1500

H.E.L.P. New Mexico

505-265-3717

The Salvation Army

505-872-1171

Silver Horizons (seniors 65+)

505-884-3881

Rio Rancho & Bernalillo

Salvation Army

505-872-1171

Los Lunas & Belen

Midwest NM CAP

505-865-9697

SHELTERS

Women

Westside Emergency Housing Center

505-839-9193

Women with Children

Barrett Foundation

505-243-4887

SHELTERS Cont.

Victims of Domestic Violence

Albuquerque

S.A.F.E. House

505-247-4219

Belen

Valencia Shelter for Victims of Domestic Violence

505-864-1383

Rio Rancho & Bernalillo

Haven House

505-896-4869

Youth

New Day Runaway House

2720-A Carlisle NE

505-260-9912

Men

Heading Home/ABQ Opportunity Center for the Homeless

715 Candelaria NE

505-344-2323

Westside Emergency Housing Center

505-839-9193

Good Shepherd Center

218 Iron Street SW

505-243-2527

Families

Joy Junction

505-877-6967

Family Promise of Albuquerque

505-268-0331 (Call for appointment & location)

Westside Emergency Housing Center

505-839-9193

Day Shelters

St. Martin's Hospitality Center -1201 3rd Street NW

505-843-9405

Motel Vouchers for Families w/ Children

Albuquerque Health Care for the Homeless

505-843-7611 or 505-242-4644